



# Home Tips®



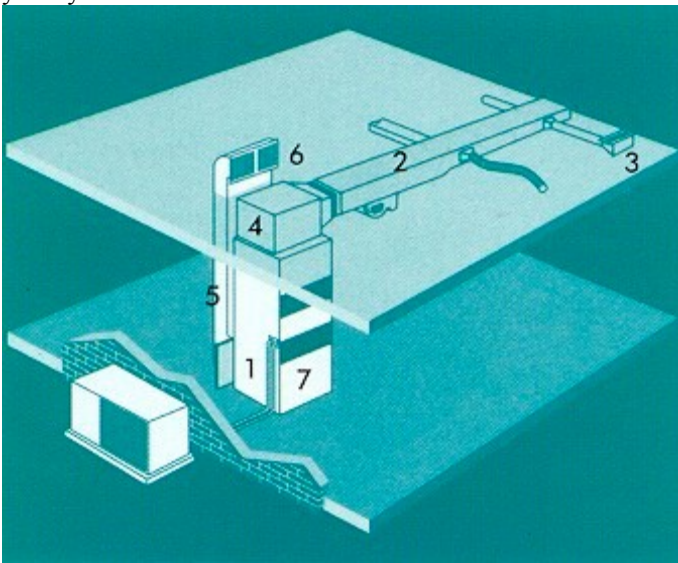
• CHRISTIAN BUILDING INSPECTORS, INC., 3697 HABERSHAM LANE, DULUTH, GEORGIA 30096, 770-849-0920 • OCTOBER 2002 •

## Q & A

### How Do You Clean Air Ducts?

*Our register covers are filthy and I'm sure our ducts are the same. Can you clean flex duct?*

Your home heat and air conditioning functions as the respiratory system of your home. In order to breathe normally, it should be cleaned periodically to remove contaminants and pollutants. There are seven steps to clean your system:



1. Truck vacuum connected to furnace or air handler
2. Supply air ducts cleaned (air brushed, power or hand brushed)
3. Supply grills cleaned in place
4. Air conditioning evaporator coil, heat exchanger and furnace cleaned
5. Return air ducts cleaned (air brushed, power or hand brushed)
6. Return air grills removed and cleaned
7. Fan, housing and motor cleaned

The National Air Duct Cleaners Association (NADCA) began a program to certify professionals in the air duct cleaning field in November of 1995. Since then, more than 1000 contractors have passed the NADCA exam and have been certified as "Air System Cleaning Specialists".

One of the local certified companies is Air Quality Systems. AQS field technicians employ state-of-the-art equipment to ensure the highest cleaning standards. All HVAC Hygiene Remediation Project Design and On-site Management is

performed under the supervision of NADCA-certified Air Systems Cleaning Specialists (ASCS).

AQS practices source removal, the only method recognized by the U.S. Environmental Protection Agency as fulfilling all requirements to clean your air system. They use equipment specially designed for ductwork cleaning: both truck mounted and portable equipment which provides the air pressure and vacuum pressure necessary to clean the system.

- AQS begins by thoroughly inspecting the HVAC system, designing a remediation plan according to the needs of the facility and the condition of the Air System.
- They sweep the duct work with 200lbs of applied air pressure while the vacuum hose pulls 12,000 cubic feet per minute back out of the duct work. The truck mounted equipment pulls the dust, mold and debris into a specially sealed compartment on the truck. Their portable Vacuum Systems utilize HEPA (High Efficiency Particulate Air) filters, capable of trapping 99.97% of particles down to .3 microns in size. Debris in the ductwork is loosened and removed by a combination of our rotary brush unit, air whips, and manual brushes on flex-rod sections, then driven to the vacuum with compressed air from blow guns and air snakes, or manually vacuumed with portable HEPA vacuum units.
- Heating/Cooling coils and pans are thoroughly cleaned as necessary with detergents and pressure-washed with our portable power wash system. Wastewater is controlled through the use of a HEPA portable Wet/Dry Vacuum.
- HVAC fan housings and blower units are cleaned with vacuum and compressed air, then pressure-washed as necessary for final cleaning.
- Degraded or contaminated internal fiberglass acoustic insulation in air handlers and ductwork is replaced when possible or encapsulated with an approved non-toxic, polymer/latex treatment.
- All supply, return and exhaust diffusers, registers and grills are cleaned.
- At your request, they will use special disinfectants on your systems and ductwork. If specified, your Air Handling System will be treated with an EPA-registered sanitizing agent to mitigate microbial growth and possible bioaerosol contamination.
- Upon completion, AQS provides a post-project inspection of the HVAC System, ensuring that proper hygiene specifications and project goals have been met.

Contact Air Quality Systems at 770-446-1142 or [www.air-quality-systems.com](http://www.air-quality-systems.com). For more information about The National Air Duct Cleaners Association (NADCA) call 1-202-737-2926 or [www.nadca.com](http://www.nadca.com).

# CCA Treated Wood?

*What is the deal with treated wood and does the wood actually contain arsenic?*

On February 12, 2002, EPA announced a voluntary decision by industry to move consumer use of treated lumber products away from a variety of pressure-treated wood that contains arsenic by December 31, 2003, in favor of new alternative wood preservatives. This transition affects virtually all residential uses of wood treated with chromated copper



arsenate, also known as CCA, including wood used in play-structures, decks, picnic tables, landscaping timbers, residential fencing, patios and walkways/boardwalks. As of January 1, 2004, EPA will not allow CCA products to be used to treat wood intended for any of these residential uses. This decision will facilitate the voluntary transition to new

alternative wood preservatives that do not contain arsenic in both the manufacturing and retail sectors. Although the Agency has not concluded that

there is unreasonable risk to the public from these products, we do believe that any reduction in exposure to arsenic is desirable. This action comes years ahead of completing the Agency's regulatory and scientific assessment of CCA and will result in substantial reductions in potential exposure to

AWPA STDS. C2, C9  
 .40 GROUND CONTACT  
 CHROMATED COPPER  
 ARSENATE (CCA-C)  
 Superior Wood Treating  
 Sumner, WA

CCA.

Source: EPA,

[http://www.epa.gov/pesticides/citizens/cca\\_transition.htm#bkmrk7](http://www.epa.gov/pesticides/citizens/cca_transition.htm#bkmrk7)

If you have a question, change of address, comment, home tip or would like to send *Home Tips* to your clients, send your letter to *Home Tips*, Christian Building Inspectors, Inc., 3697 Habersham Lane, Duluth, Georgia, 30096-6111. You can also E-Mail your questions to us at [rodharrison@christianbuildinginspectors.com](mailto:rodharrison@christianbuildinginspectors.com). We reserve the right to edit questions for length.

## MOLD TESTING AVAILABLE

To Have Your Home Tested Contact  
**Christian Building Inspectors, Inc.**  
**1-888-257-0365 or 770-849-0920**

## Quote Of The Month

**"DUTY IS A VERY PERSONAL THING. IT IS WHAT COMES FROM KNOWING THE NEED TO TAKE ACTION AND NOT JUST A NEED TO URGE OTHERS TO DO SOMETHING."**

- MOTHER TERESA OF CALCUTTA

## A Tip Of The Hat To:

***Diana Coombs***  
*Re/Max Center*  
***2855 Lawrenceville-Suwanee Road***  
***Suwanee, Georgia 30024***



*Thank You*

# • CHRISTIAN BUILDING INSPECTORS, INC. •

- Member: ASHI, GAHI, MAIA, SBCCI •
- SBCCI CODE CERTIFIED CABO ONE & TWO FAMILY DWELLING INSPECTOR No. 1619 •
- For Additional Information, Contact Rod Harrison or Terri Whitehead •
- Office: Monday-Friday 770-849-0920, Fax 770-849-0540, Digital Pager 770-890-4503 •
- Web Page: [www.christianbuildinginspectors.com](http://www.christianbuildinginspectors.com) E-Mail: [rodharrison@christianbuildinginspectors.com](mailto:rodharrison@christianbuildinginspectors.com) •



- Site
- Interior
- Air Conditioning
- Drainage
- Exterior
- Attic
- Foundations
- Appliances
- Roofing
- Floor Slabs
- Ventilation
- Safety
- Crawl Spaces
- Electrical
- New Homes
- Basements
- Plumbing
- Warranty
- Structural
- Heating
- Construction