



Home Tips®



• CHRISTIAN BUILDING INSPECTORS, INC., 1003 STAR COURT, NORCROSS, GEORGIA 30093, (770) 925-8518 • DECEMBER 1994 •

Q & A

Winterize The Attic?

Is it okay to cover our roof turbines and seal the gable vents in the attic during the winter to conserve the attic heat?

To put it simply, No! You ventilate the attic for two main reasons. To remove the excessive heat during the summer months and to remove moisture all year long.

The moisture can build up in the winter and attack the framing and plywood decking causing mold and mildew to form. If left for a long enough period, it will eventually cause wood decay. The moisture can also reduce the efficiency of your attic insulation by 35%.

The best way to conserve heat is to insulate the attic with enough fiberglass blown insulation or enough fiberglass batt insulation to achieve a rating of R-30 for gas heat and R-38 for electric resistance heat. This will keep the heat where it belongs, inside you house-not your attic.

Crawl Space Insulation?

I want to insulate the floor over my crawl space. How much insulation is needed and how do I install it?

In the Atlanta area the U.S. Department of Energy recommends that you use R-19 for floors over unheated crawl spaces.

The first thing I would do is to seal all openings in the floor with an expandable spray foam insulation. Be sure to seal around all plumbing pipes, electrical wires and heat ducts. This will cut down on the air flow. Next use 6 1/4" fiberglass batt insulation with a vapor barrier. Cut the insulation to length and install it with the vapor barrier (paper side) towards the plywood subflooring which is the heated area. Hold the insulation in place by using wire insulation supports which are wire rods that are precut for 16" or 24" joist spacing. You can also use wire and crisscross under the joist or even wood strips tacked to the bottom of the floor joist.

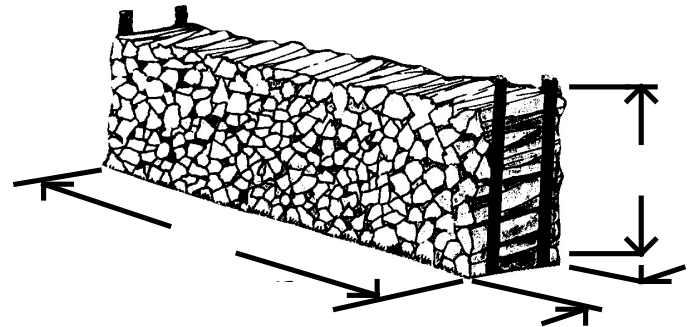
Since you will be working with the insulation side facing you, be sure to wear proper protective gear such as workgloves, long sleeve shirts, protective glasses and a dust respirator.

Also, close the foundation vents in the winter. If the vents cannot be closed, try to seal them with a piece of insulation board or plywood. Remember to open the foundation vents in the summer to help air out the crawl space.

What's A Cord?

We are planning to build a firewood rack next to our house and we only have one question. How big is a cord of wood?

First of all, do not build the rack next to your house. This will provide an excellent way for termites to enter your home. Move the rack at least a foot away.



A cord of wood is 128 cubic feet. If you cut your logs 2 feet long (which is the standard length) the rack could be 16 feet long by 4 feet high.

Christmas Lighting Safety?

Christmas is the time of year when we pull out lights and all types of decorations to celebrate the season. It is also the time of year that we have many fires associated with Christmas trees and lighting. Here are some tips.

Make sure the lights you use are labeled "UL-listed". Lights rated for outdoor use can be used indoors or outdoors, but do not use lights rated for indoor use outside. All UL-listed indoor light sets will have a green UL label and outside light sets have a red one.

Follow the manufacturer's instructions that came with your holiday decorations.

Replace any electrical decorations that have broken or cracked sockets, frayed wires or loose connections.

