



# Home Tips



• CHRISTIAN BUILDING INSPECTORS, INC., 3697 HABERSHAM LANE, DULUTH, GEORGIA 30096, 770-849-0920 • SEPTEMBER 2012 •

## Q & A

### NEW REQUIREMENTS FOR HIGH EFFICIENCY PLUMBING FIXTURES

**1. Requirements for high efficiency plumbing fixtures.** On or after July 1, 2012, in accordance with O.C.G.A. Section 8-2-3(a), the installation of high efficiency plumbing fixtures is required in all new construction. This includes both residential and commercial installations.



**Note:** The requirements for high efficiency plumbing fixtures resulted from Senate Bill 370 which was enacted into state law in July 2010 with a delayed effective date of July 1, 2012.

#### 2. Definitions of High Efficiency Plumbing Fixtures:

- **Single flush water closet.** A single flush water closet or toilet, including gravity, pressure assisted, and electro-hydraulic tank types, which the average flush volume does not exceed 1.28 gallons and is listed to the WaterSense Tank-Type High Efficiency Toilet Specification. Single flush toilets shall also comply with the flush volume testing requirements of ASME A112.192/CSA B45.1-2008 or ASME A112.19.14-2006.
- **Dual flush water closet.** A dual flush water closet or toilet which the average flush volume of two reduced flushes and one full flush does not exceed 1.28 gallons and is listed to the WaterSense Tank-Type High Efficiency Toilet Specification. Dual flush toilets shall comply with the flush volume testing requirements of ASME A112.19.2-2008 and ASME A112.19.14-2006.
- **Lavatory faucet or lavatory replacement aerator.** A lavatory faucet or lavatory replacement aerator that allows a flow of no more than 1.5 gallons per minute at a pressure of 60 pounds per square inch and is listed to the WaterSense High Efficiency Lavatory Faucet Specification.
- **Kitchen faucet or kitchen faucet replacement aerator.** A kitchen faucet or kitchen replacement aerator that allows a flow of no more than 2.0 gallons of water per minute.

Note: Kitchen faucets or kitchen faucet replacement aerators are not required to be WaterSense listed.

- **Shower head.** A shower head that allows a flow of no more than the average of 2.5 gallons of water per minute at 60 pounds per square inch of pressure. Note: Shower heads are not required to be WaterSense listed.

**3. Sale of non-high efficiency toilets or water closets.** After July 1, 2012, in accordance with O.C.G.A. 8-2-3(j), the sale of a gravity tank type, flushometer valve or flushometer tank toilet or water closet that uses more than an average of 1.28 gallons of water per flush is prohibited in Georgia.

### FloodSafe Water Hoses

Watts is pleased to introduce its new line of FloodSafe® Auto-Shutoff Connectors. The FloodSafe's patented design protects against catastrophic water damage caused by burst, broken or



Faucet Connectors

Toilet Connectors



Washing Machine Connectors



Ice Maker Connectors

ruptured water supply hoses and fittings. FloodSafe® connectors include a standard braided stainless steel flexible hose and a FloodSafe® shutoff device located on the inlet.

#### Problem

In recent years, losses due to water and mold damage to residential and commercial buildings have been steadily on the rise. Water supply hoses are vulnerable to a number of potential problems. Over time, hoses can become brittle and burst. Poorly manufactured hoses can break under normal pressure conditions, and hoses used in public venues are highly



vulnerable to tampering by vandals. All of these conditions can lead to a flood of problems for homeowners, property managers and maintenance personnel.

**Solution**

Watts FloodSafe® auto-shutoff connectors protect against catastrophic water damage by automatically shutting off the **FloodSafe® Shutoff Device**

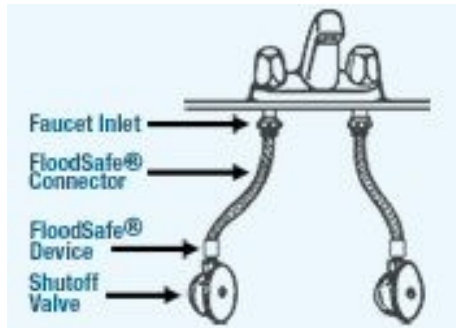


**Braided Stainless Steel Connector**

water supply to plumbing fixtures/appliances if excess water flow is sensed. Water flow through the FloodSafe® device is limited to a factory preset flow rate. Any flow over the preset rate will automatically shut off all flow of water through the device.

**How it Works**

FloodSafe® is actuated by flow of cold or hot water in excess of the design flow rate indicated on the label. Once a downstream flow of water in excess of the flow required by any standard fixture/appliance is detected,



FloodSafe® assumes a burst and the flow of water is shut off. FloodSafe® remains in the closed position until it is reset. To help illustrate

this, check out our [FloodSafe® Video](#) in our Media Center for full details.

- The only economical and secure safeguard against catastrophic water damage available on the market
- Patented design
- No mechanical moving parts during normal operation, ensuring years of maintenance free operation

- Does not require electricity, batteries or any other source of power
- Maintenance free
- CSA, NSF and IAPMO Listed



- Installs between the shutoff valve and the fixture or appliance with the FloodSafe® device located at the shutoff valve
- Acts as a water conservation device, by shutting off the water to the faucet when the mandated low restrictor is removed
- Available for faucets, toilets, ice makers, dishwashers and washing machines.

Source:

[http://www.watts.com/pages/whatsnew/floodsafe\\_connectors.asp](http://www.watts.com/pages/whatsnew/floodsafe_connectors.asp)

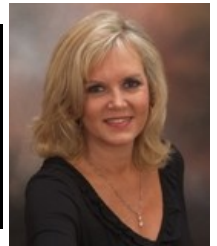
***Quote Of The Month***

"You cannot have a harvest without sowing a seed."

Joel Osteen

***A Tip Of The Hat To:***

***Debbie Scott***  
***Prudential Georgia Realty***  
***310 Town Center Avenue, Suite B1***  
***Suwanee, Georgia 30024***  
***770-633-0494***



***Thank You***

**CHRISTIAN BUILDING INSPECTORS, INC.**

- Member: ASHI, GAHI, ICC •
- International Code Council Residential Combination Inspector No. 5185008-R5 •
- Fully Insured With Errors & Omissions and Liability Insurance •
- Office: 1-888-257-0365 or 770-849-0920, Fax 770-849-0540, Cell 404-697-4129 •
- Web Page: <http://www.christianbuildinginspectors.com> , Email: [rodharrison@christianbuildinginspectors.com](mailto:rodharrison@christianbuildinginspectors.com) •



- Site
- Drainage
- Foundations
- Floor Slabs
- Crawl Spaces
- Basements
- Structural
- Interior
- Exterior
- Appliances
- Ventilation
- Electrical
- Plumbing
- Heating
- Air Conditioning
- Attic
- Roofing
- Radon
- Mold
- Warranty
- New Homes